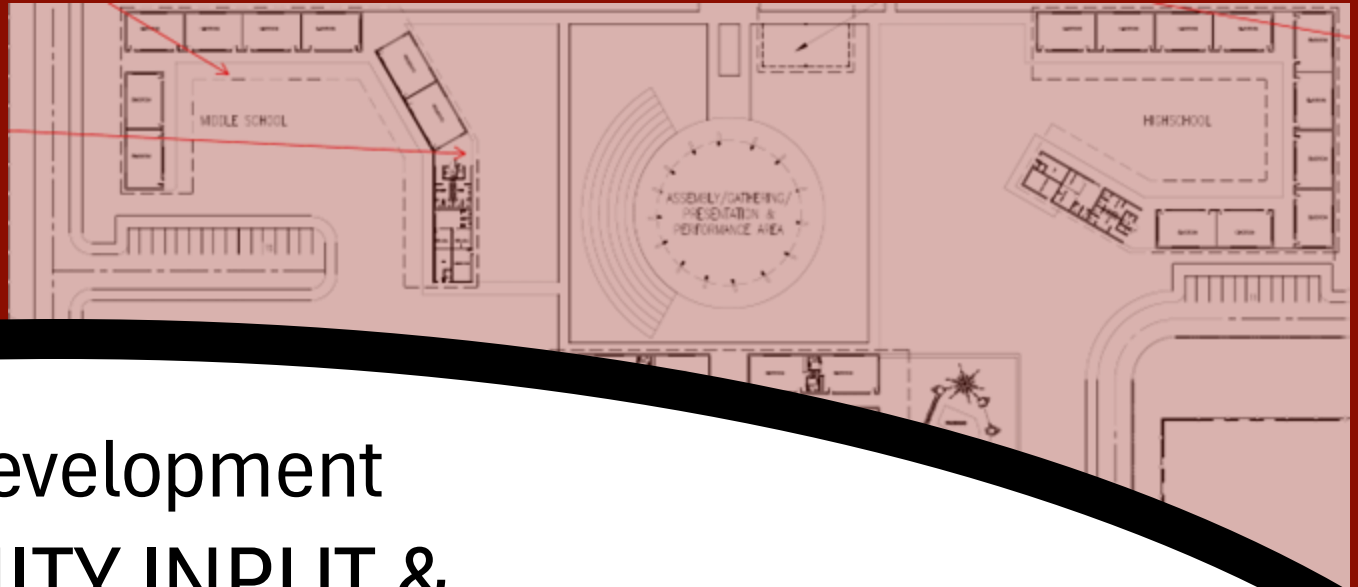




THE VOLCANO SCHOOL OF ARTS & SCIENCES

Hawai'i-Focused Public Charter School



Campus Development COMMUNITY INPUT & INFORMATIONAL MEETING

January 15, 2025

AGENDA

- Welcome & Introductions
- Background
- Keakealani - Update
- Old Volcano Road Makai
 - Overview
 - Design Input Breakouts & Share-out
- Q&A



MAHALO NUI LOA!

**Volcano community for your support
and patience!**

Project Teams

- Tamar DeFries, Project Consultant
- Robert Hall, Project Consultant
- Jessica Rojas, Business Manager

Keakealani Campus

- Boone Morrison, Architect
- Seth Warner, Architect
- Land Planning Hawaii
- Engineering Partners Inc.
- Civil Construction
- Goodfellow Bros.
- Sun Construction
- Bowers + Kubota

OVR Makai Campus

- Michael Hoffman, Architect
- Land Planning Hawaii

Friends of The Volcano School of Arts & Sciences (FVSAS)

- Ian Cole, Chair
- Jeffrey Mermel, Vice Chair
- David Goodman, Treasurer
- Lynn Melena, Secretary
- Lorna Larsen-Jeyte, Director
- Melissa Fletcher, Director, Construction Committee Chair
- Matt Luera, Construction Committee
- James Sutton, Construction Committee
- Bill Hamilton, Construction Committee

And all of the former FVSAS directors who have contributed to facilities projects

Kamehameha Schools
Department of Education
Richard Onishi
Russel Ruderman
County of Hawai'i
W.H. Shipman, Ltd.

- Peggy Farias
- Kimo Lee
- Oliver English

VSAS Governing Board,
staff, parents, and
students

BACKGROUND



BACKGROUND

- Current enrollment is at 350 PreK to 12th with 158 on the waitlist
- Future community growth needs projected at two classes per grade level PreK-12
- Keakealani Campus is 3.35 acres with cap of 250 students per Special Use Permit
- Lease expires May 2028 on current Old Volcano Road campus



KEAKEALANI CAMPUS



KEAKEALANI



VSAS KEAKEALANI CAMPUS DEVELOPMENT PROJECT
CAMPUS OVERVIEW



DOONE MORRISON, ARCHITECTS, INC. © 2017

Keakealani PHASE I Design & Planning

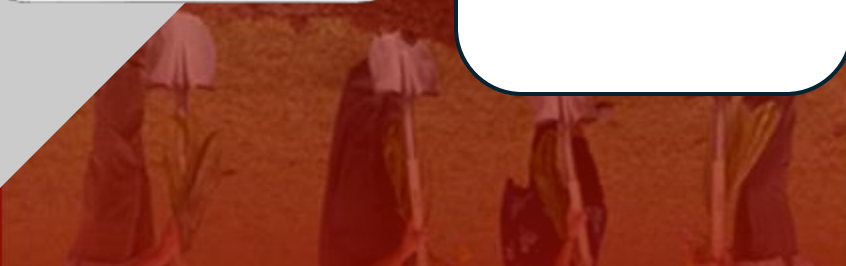


Architectural Design
Site Plan
December 2016

Special Use Permit
December 2018

\$12 million Capital
Improvement Project
awarded
June 2019

Final Plan Approval
from Hawaii
County Planning
Department
December 2019



Keakealani PHASE II Initial Infrastructure



General
Contractor initial
infrastructure
selected
November 2019

Grading Permit
Approval
August 2020

Disability &
Communication
Access Board
(DCAB) Approved
October 2020

Building Permit
issued
April 2022

Phase II completed with
initial infrastructure,
portable classroom, and
mobile kitchen (Final
Building Inspection and
Certificate of Occupancy)
August 2022

Keakealani PHASE III Master Build A



Request for Qualifications
notice issued on
December 2023

Notification of Preferred
Offeror, Goodfellow-Sun JV,
LLC issued
May 2024

FVSAS-GSJV Contract
executed
December 2024

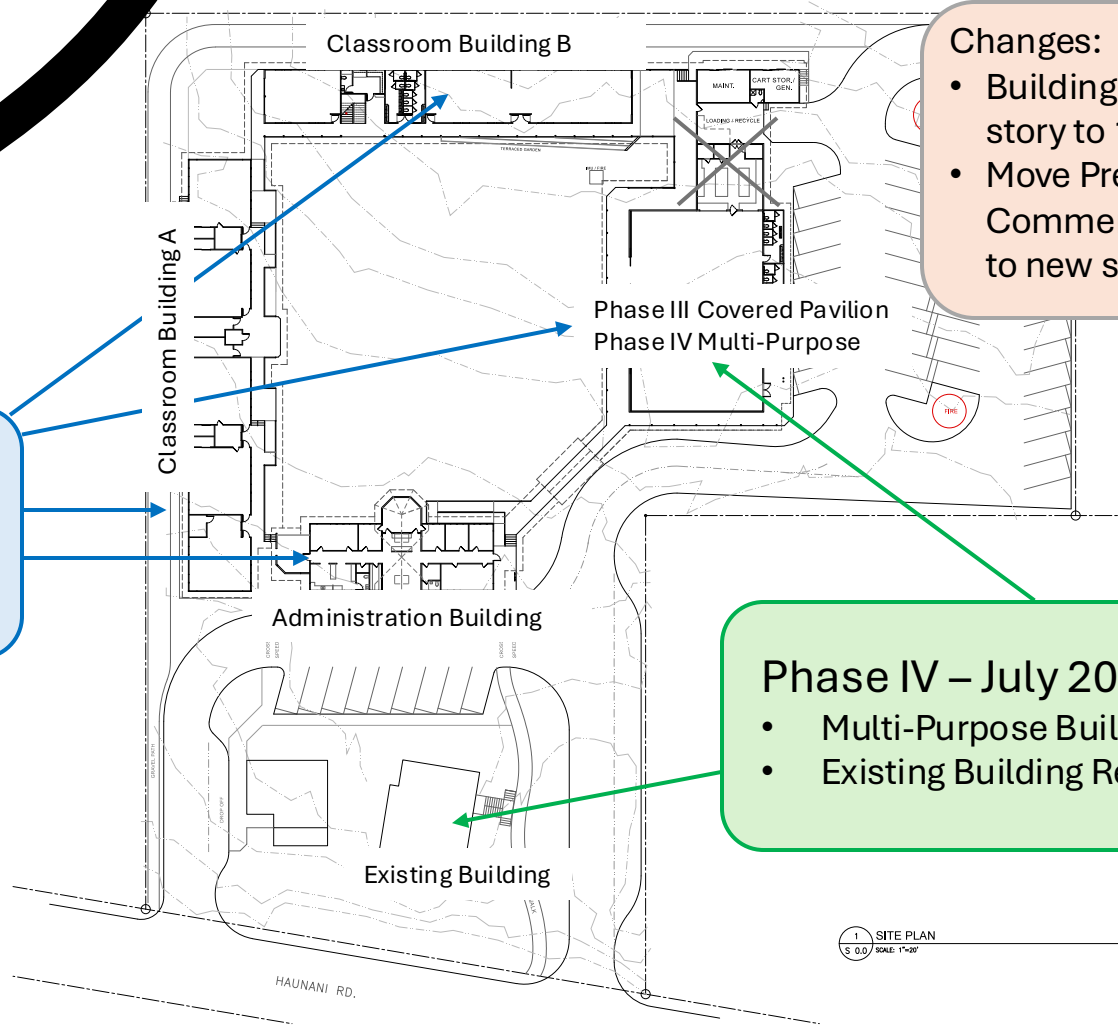


GOODFELLOW SUN JV, LLC

Keakealani PHASE III & IV

Phase III – July 2027

- Classroom Buildings
- Covered Pavilion
- Administration Building



Changes:

- Building B from 2-story to 1-story
- Move PreK & Commercial Kitchen to new site

Phase IV – July 2030

- Multi-Purpose Building
- Existing Building Renovations

Keakealani PROJECT BUDGET



PROJECT INCOME

State Grants-in-Aid	1.35 M
Atherton	50 K
State Capital Improvement Project (CIP)	12 M
Total Project Income	13.4 M
Total Expended to Date	- 3.78 M
Funds Available	9.6 M

BUDGET

Phase III Transition	850 K
Phase III Master Build *	8.5 M
*\$500 SF 17,000 SF = \$8.5 M	
Phase IV	3.2 M
Funds needed	3 M
Total Project Cost	16.4 M

Keakealani COST COMPARISON

Cost per Square Foot



\$450

Modular Classrooms



\$500

Original Keakealani Design



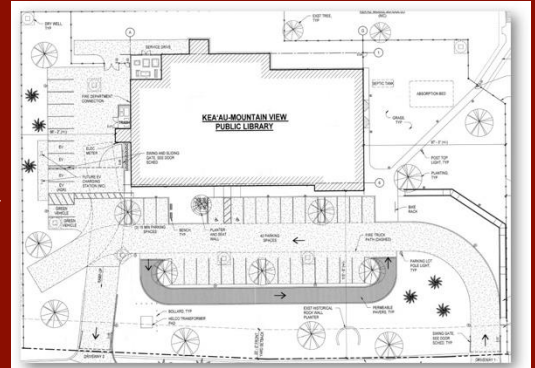
\$700

Kea'au Public Library



\$1,354

Estimated Phase III Cost



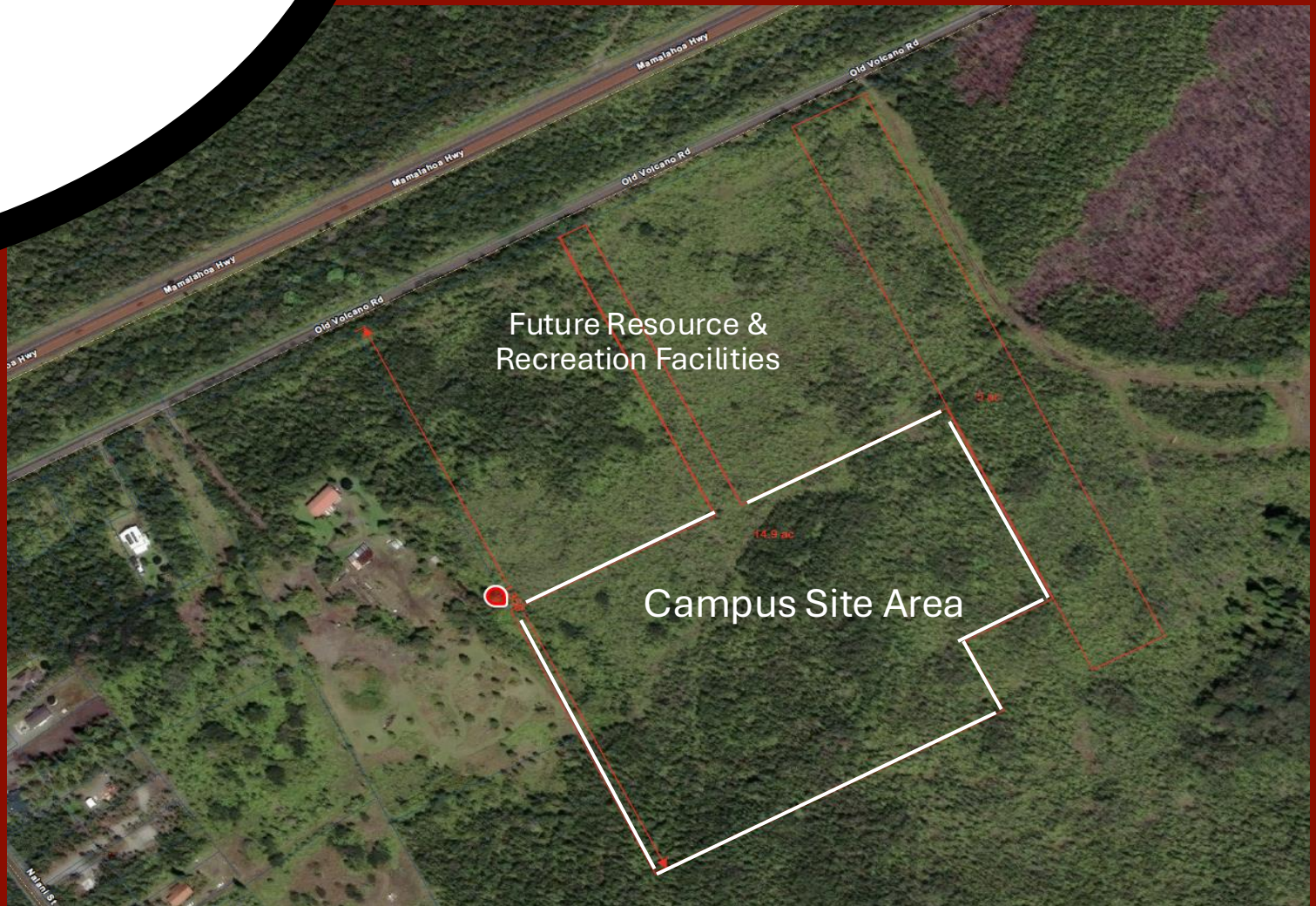
OLD VOLCANO ROAD
MAKAI



OLD VOLCANO ROAD MAKAI



SATELLITE VIEW



TIMELINE

Phase I - August 2027

- Driveway
- Grubbing & Grading
- Pre-Kindergarten
- Portables (High School transition)

Phase II - August 2029

- Middle School Pod
- Cafeteria / Administration
- Assembly

Phase III - August 2032

- High School Pod
- STEAM/Shop



BUDGET & COST PROJECTIONS



BUDGET

Phase I

- Land purchase	600 K
- Planning & Design, Special Use Permit	100 K
- Initial Infrastructure, HS Transition, PreK	4.3 M

Phase II 17K SF @ \$550/SF 9.3 M

Phase III 14K SF @ \$600/SF 8.4 M

Total Project Cost 22.8 M

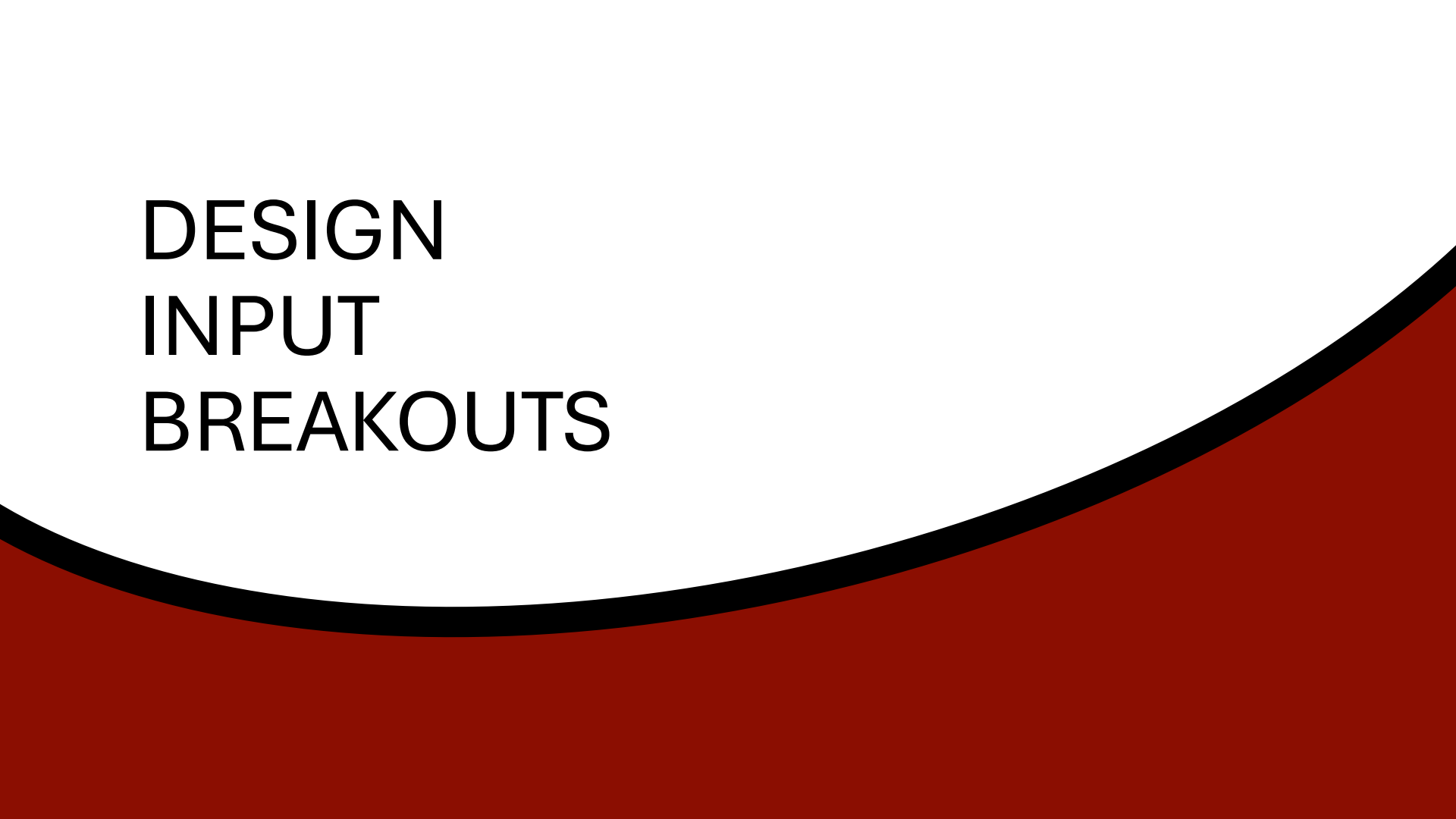
PHASE I

Phase I 5 M

Funds Raised 700 K

Funds Needed 4.3 M

DESIGN
INPUT
BREAKOUTS



DESIGN INPUT BREAKOUTS

Group X
Participant Names

Stakeholder
Group

Needs
to be able to
(function, purpose)

Possible
solutions include
(form)

Please write legibly



Q&A



For updates

[www.volcanoschool.net/campus development](http://www.volcanoschool.net/campus-development)

friends@volcanoschool.net